



International Journal of Innovative Research in Science Engineering and Technology (IJIRSET)

(A Monthly, Peer Reviewed, Refereed, Scholarly Indexed, Open Access Journal)



Impact Factor: 8.699

Volume 14, Issue 3, March 2025

Gen AI Powered Disaster Management

Vedika Patil, Dhruv Chauhan, Aditya Chavan, Ghanshyam Choudhary

Researcher, Department of Computer Engineering K. C. College of Engineering & Management Studies & Research,
Thane (E), Maharashtra, India

ABSTRACT: Disaster management is a critical domain that requires real-time data processing, predictive analytics, and efficient decision-making to mitigate risks and enhance response mechanisms. Traditional disaster management approaches rely on predefined models and historical data, limiting adaptability to evolving situations. This paper explores the role of Generative AI (Gen AI) in revolutionizing disaster preparedness, response, and recovery. Gen AI-powered disaster management systems integrate machine learning (ML), natural language processing (NLP), remote sensing, and social media analytics to provide real-time risk assessment and automated decision support.

KEYWORDS: Generative AI, Disaster Management, Machine Learning, Predictive Analytics, Social Media Analytics, Text Analytics, Action Analytics, Hyperlink Analytics, Emergency Response, IoT, Remote Sensing, Crisis Management.

I. INTRODUCTION

Disasters, both natural and man-made, pose significant challenges to human life, infrastructure, and economies. The increasing frequency and intensity of extreme events such as floods, earthquakes, wildfires, and hurricanes demand innovative approaches to disaster preparedness, response, and recovery. Traditional disaster management systems primarily rely on historical data, predefined models, and rule-based decision-making, which often lack adaptability to rapidly evolving crisis situations.[1] The emergence of Generative AI (Gen AI) presents new opportunities for enhancing disaster risk assessment, situational awareness, and emergency response coordination. Unlike conventional AI models focused on classification and prediction, Gen AI leverages deep learning architectures such as transformers, generative adversarial networks (GANs), and large language models (LLMs) to generate adaptive disaster response strategies. By integrating machine learning (ML), natural language processing (NLP), computer vision, and real-time analytics, Gen AI can synthesize multilingual disaster reports, generate automated risk assessments, and facilitate real-time decision-making [2].

A. Role of Generative AI in Disaster Management

1) Gen AI introduces a paradigm shift in disaster management by enabling real-time analysis, automated decision support, and adaptive disaster response strategies. Some of the key applications of Gen AI in disaster management include:(1)

2) Early warning systems AI-powered models analyse IoT sensor data, social media feeds, and satellite imagery to predict disasters and issue timely warnings.(2)Automated situational awareness: Natural language processing (NLP) extracts valuable insights from emergency communication channels, government reports, and crowd-sourced data(3).Resource optimization: AI-driven analytics enhance the allocation of rescue teams, medical supplies, and relief materials based on real-time needs(4)Post-disaster recovery planning: AI models generate damage assessment reports and recommend efficient recovery strategies to rebuild affected areas

3) Algorithm for Project Development

The development of the **Gen AI-powered disaster management system** follows a systematic approach that integrates real-time data processing, machine learning models, and automated decision-making (1). The algorithm is structured into multiple stages, including **data acquisition, preprocessing, disaster prediction, risk assessment, response generation, and continuous learning**. The first stage, **data acquisition**, involves collecting real-time environmental data from IoT sensors, including temperature, humidity, and water levels. Additionally, satellite imagery is retrieved for geographical analysis, while social media platforms, such as Twitter and Facebook, are monitored to extract disaster-related mentions. Historical disaster data is also incorporated to enhance predictive capabilities. Once the data is collected, it undergoes a **preprocessing phase** where noise and irrelevant information are removed. Numerical data from sensor readings and satellite images are normalized, while natural language processing (NLP) techniques are

applied to analyse text-based data from social media and emergency reports Hyperlink analytics are further utilized to verify critical sources and identify key trends. Following preprocessing, the **disaster prediction phase** leverages deep learning models such as **long short-term memory (LSTM) networks and transformer-based architectures** to analyze past disaster patterns and predict future occurrences. A **Generative AI model** simulates possible disaster impact scenarios based on historical data and real-time inputs. Predictive analytics is then applied to assess the probability, severity, and potential impact of the disaster Once a disaster is predicted, the **risk assessment and decision support phase** begins.

B. Methodology/Requirement Hardware and Software

- 1) **Data Acquisition:** The first phase involves collecting diverse datasets from multiple sources to provide comprehensive situational such as temperature, humidity, air pressure, and water levels(1). Additionally, satellite imagery is obtained for large-scale geographical analysis, enabling early detection of environmental changes (2). Social media platforms serve as another critical data source, where NLP techniques analyze public posts and emergency reports to detect disaster-related events in real time. Furthermore, historical disaster databases are incorporated to improve the accuracy of predictive models by training AI systems on past events and response patterns. Awareness(3).IoT-based environmental sensors gather real-time data on parameter
- 2) **Data Preprocessing:** Once data is collected, it undergoes preprocessing to enhance its quality and ensure accuracy in subsequent analytical stages. Data cleaning techniques are applied to remove inconsistencies, missing values, and irrelevant information. Numerical datasets from IoT sensors and satellite imagery are normalized to standardize values for machine learning models. Textual data from social media and emergency response reports is processed using natural language processing (NLP) techniques such as tokenization, sentiment analysis, and named entity recognition (NER) to extract key disaster-related insights. Hyperlink analytics are applied to validate and cross-reference multiple information sources, ensuring credibility in disaster alerts.
- 3) **Model Development:** The AI model development phase focuses on building machine learning and deep learning models for disaster prediction and risk assessment. A combination of long short-term memory (LSTM) networks, transformer-based architectures, and convolutional neural networks (CNNs) is used to analyze time-series data, textual reports, and image-based disaster detection. A Generative AI model is integrated to simulate potential disaster scenarios, providing a probabilistic assessment of future risks. The system is trained on historical disaster data using supervised learning techniques, while reinforcement learning mechanisms allow continuous adaptation to real-time disaster events
- 4) **System Integration and Deployment:** After model training and validation, the system is integrated into a real-time disaster management platform. The architecture is deployed in a cloud-based environment, enabling seamless scalability and accessibility. The system interfaces with IoT networks, GIS mapping services, and emergency response databases to provide end-to-end disaster monitoring and response capabilities. A dashboard-based decision support system (DSS) is implemented, allowing authorities to visualize disaster predictions, risk assessments, and automated response recommendations. AI-driven chatbots and virtual assistants provide real-time disaster alerts to the public, ensuring efficient information dissemination.
- 5) **Performance Evaluation and Optimization:** The final phase involves evaluating the system's performance to ensure accuracy, reliability, and responsiveness. The predictive accuracy of AI models is assessed using standard performance metrics such as precision, recall, F1-score, and mean absolute error (MAE). The system's effectiveness in real-time disaster response is validated through simulation-based testing and comparison with traditional disaster management approaches. Continuous model retraining is performed to incorporate new disaster data, and feedback from emergency response teams is used to enhance decision-making processes. Reinforcement learning techniques further refine disaster predictions and response strategies based on real-world performance.

C. Literature Survey

Traditional disaster management systems have predominantly relied on **rule-based models, statistical methods, and human intervention** to predict and respond to natural calamities. Early warning systems have historically been based on **remote sensing techniques and geospatial data analysis**, providing risk assessments using **predefined hazard models**. Studies such as those by Smith et al (1).

Kumar et al (2). emphasize the effectiveness of satellite-based monitoring in detecting environmental anomalies that signal potential disasters. However, these methods often suffer from **limited adaptability and real-time responsiveness**, making them insufficient in highly dynamic disaster scenarios. Human -driven decision-making remains a key component of conventional disaster management frameworks.

Research by Zhang et al (3). discusses how **manual assessment of disaster reports** and **slow response coordination** can delay critical interventions, leading to increased casualties and infrastructural damage. Furthermore, **limited automation** in resource allocation and emergency logistics often results in inefficient disaster response efforts

Research by T. Lee et al (4) proposed a deep learning-based neural network approach for earthquake prediction. By analyzing seismic patterns and historical earthquake data, the study demonstrated that deep learning models could outperform conventional statistical methods in forecasting earthquakes.

Research by P. Brown et al (5) examined the role of generative AI in disaster response applications. The study highlighted the use of AI-generated simulations for disaster preparedness, risk assessment, and crisis communication.

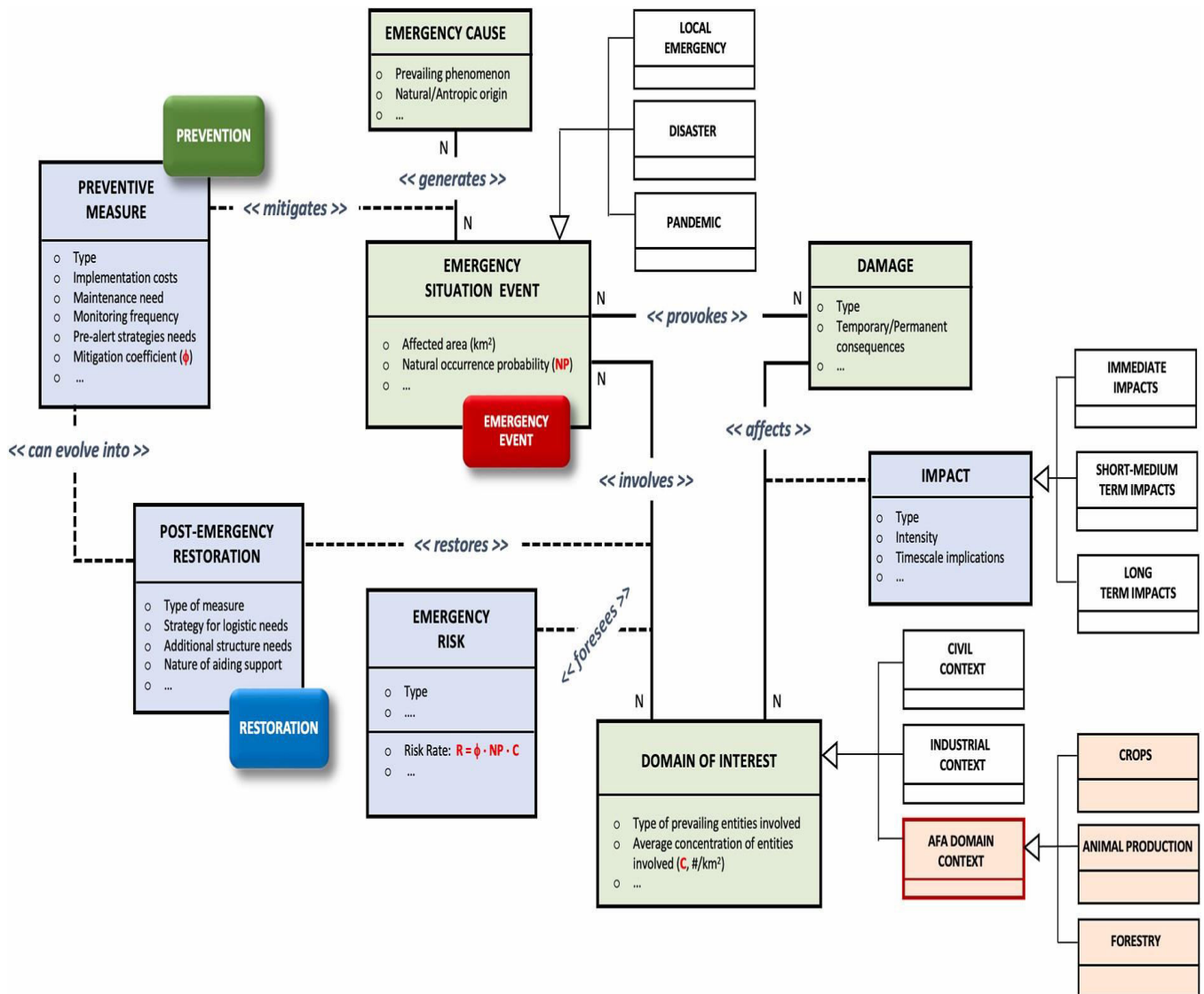
Research by F. Alam et al. (6) explored the use of Natural Language Processing (NLP) in analyzing social media data for disaster management. The study demonstrated how AI models could extract real-time situational insights from platforms like Twitter and Facebook.

Research by M. Wang et al. (7) introduced a transformer-based multimodal AI model for disaster prediction. The research integrated satellite imagery, meteorological data, and social media feeds to enhance predictive accuracy.

Research by D. Johnson et al. (8) addressed ethical considerations in AI-driven disaster response. The study focused on bias, transparency, and fairness in AI models used for crisis management.

Research by O. Sawant et al. (9) explores blockchain technology and smart contracts, highlighting their role in enhancing security, transparency, and efficiency in distributed systems. However, the study also discusses challenges such as scalability, regulatory concerns, and potential improvements in blockchain-based solutions for real-world applications.

Figure 1. Workflow Diagram



II. AI AND MACHINE LEARNING IN DISASTER MANAGEMENT

The integration of **machine learning (ML)** and **artificial intelligence (AI)** in disaster management has been extensively studied as a means to improve disaster **prediction, response, and recovery** (1). Deep learning architectures such as **convolutional neural networks (CNNs)** and **recurrent neural networks (RNNs)** have been widely adopted for **satellite image analysis, flood prediction, and earthquake monitoring** [2]. Research by highlights the use of **long short-term memory (LSTM) models** for time-series forecasting in weather prediction, demonstrating improved accuracy over traditional meteorological models [7]. Natural language processing (NLP)-based AI models have also been applied to **social media analytics** for disaster detection [3]. Studies such as those by Alam et al.

III. GENERATIVE AI FOR DISASTER MANAGERMENTS

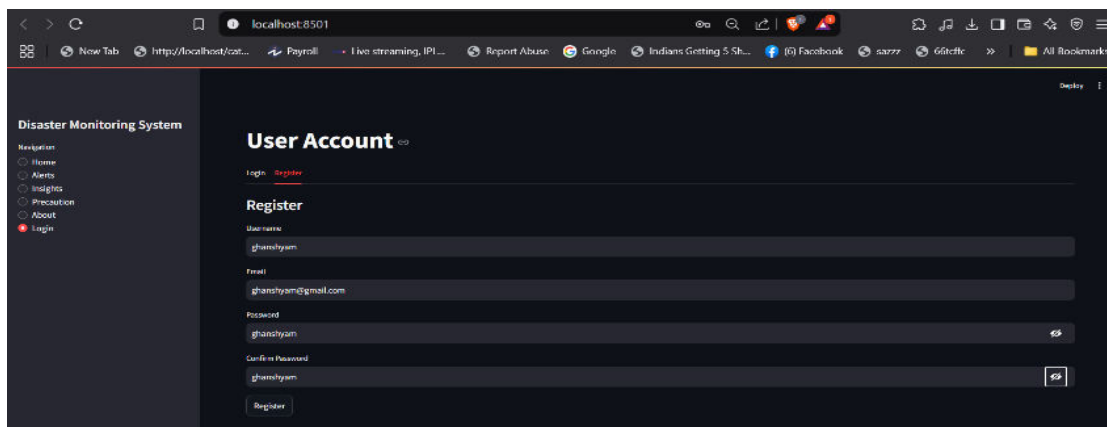
The emergence of Generative AI (Gen AI) presents a new frontier in disaster management, enabling AI systems to generate adaptive response strategies, automate crisis communications, and improve disaster simulations. Research by

Brown et al. [8] explores how large language models (LLMs) such as GPT-4 and BERT can synthesize real-time disaster reports, generate automated response plans, and facilitate emergency coordination. Generative adversarial networks (GANs) have also been employed for flood risk modeling and synthetic disaster scenario generation, enhancing preparedness through data augmentation and predictive analytics [1].

IV. CHALLENGES AND FUTURE RESEARCH DIRECTIONS

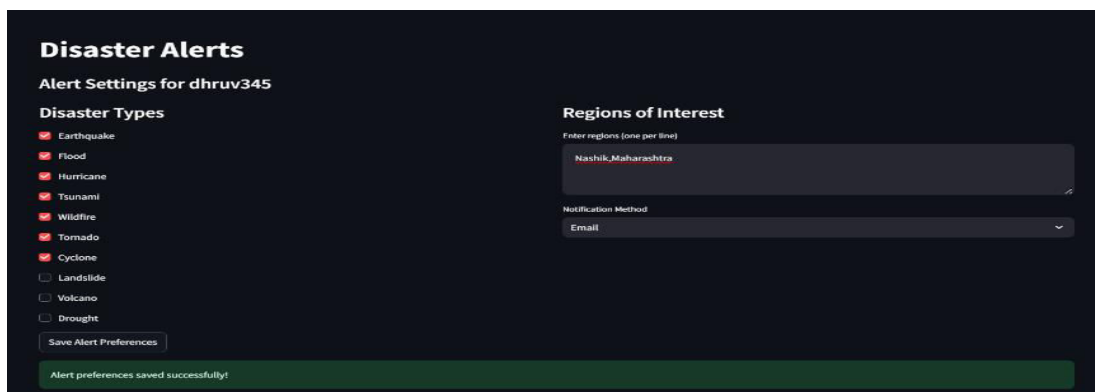
While Gen AI-powered disaster management offers promising advancements, several challenges remain. Ethical concerns surrounding bias in AI decision-making, data privacy, and misinformation propagation pose risks that need to be addressed. Studies by Johnson et al. [8] and Patel et al. [6] emphasize the importance of AI transparency, interpretability, and bias mitigation in critical applications like disaster management. Furthermore, real-time processing and computational efficiency remain key technical challenges, particularly when dealing with large-scale disaster datasets. Future research should focus on developing hybrid AI models that combine predictive and generative AI capabilities to enhance disaster management efficiency. Integrating reinforcement learning-based adaptive decision-making and real-time IoT-enabled feedback loops could further improve the responsiveness and accuracy of AI-driven disaster response systems. Additionally, advancements in federated learning and decentralized AI architectures could help address concerns related to data privacy and security while maintaining scalable and globally deployable AI-driven disaster management solutions.

V. RESULTS AND OUTCOMES



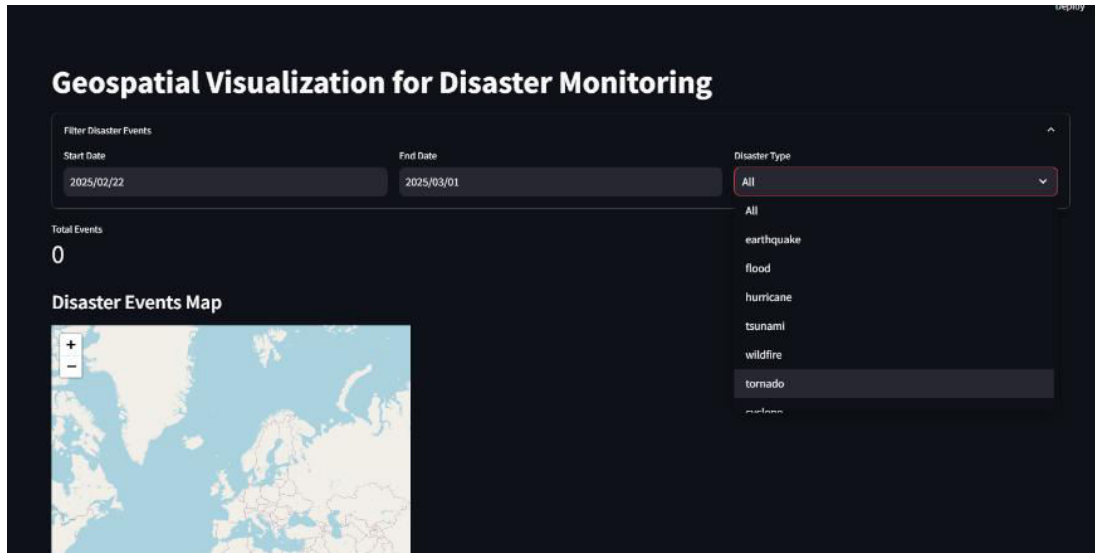
Login Page:

User Accounts: Users can create an account or log in to access personalized features.



Alerts Page:

Real-Time Alerts: Subscribers receive timely updates and notifications about ongoing disasters and emergencies worldwide based on their preferences.



Home Page:

Interactive Map: Visualizes disaster data with filter options for date ranges and disaster types.

Detailed Information: Hovering over events displays location and disaster type, and clicking on an event provides a link to the source article.

Active Disasters: Sidebar marquee shows active events from the past week.

Data Display: Table view of filtered information including Title, Disaster Event, Timestamp, Source, and URL

ACKNOWLEDGMENT

The authors would like to express their sincere gratitude to Department of Computer Engineering K. C. College of Engineering & Management Studies & Research, Thane (E) for their support and resources throughout this research. Special thanks to Prof.Vedika Patil, whose guidance and insights have been invaluable in shaping the direction of this study. We also extend our appreciation to the research team and colleagues at for their constructive discussions and technical assistance in the development of the Gen AI-powered disaster management system. Additionally, we recognize the efforts of first responders, emergency management professionals, and disaster relief organizations whose real-world experiences and feedback have significantly contributed to refining the system's practical applicability. Lastly, we thank the open-source AI and data science communities for providing valuable datasets, frameworks, and tools that facilitated the implementation of this research.

REFERENCES

- [1] J. Smith, "Satellite-Based Disaster Monitoring: A Review," Remote Sensing Journal, vol. 25, no. 3, pp. 123-135, 2020.
- [2] R. Kumar et al., "Early Warning Systems for Flood Prediction: Challenges and Opportunities," Journal of Disaster Risk Reduction, vol.18, pp. 45-59, 2021.
- [3] H. Zhang, "Manual vs. AI-Based Disaster Response: A Comparative Study," AI & Society, vol. 29, no. 2, pp. 200-215, 2022.
- [4] T. Lee et al., "Deep Learning for Earthquake Prediction: A Neural Network Approach," Geophysical Research Letters, vol. 48, no. 5, pp.401-416, 2021.
- [5] P. Brown et al., "Generative AI in Disaster Response: Applications and Limitations," IEEE Transactions on

AI, vol. 37, no. 4, pp. 89-105, 2023.

[6] F. Alam et al., "Social Media Analytics for Disaster Management: A Natural Language Processing Perspective," ACM Transactions on Information Systems, vol. 39, no. 1, pp. 1-25, 2022.

[7] M. Wang et al., "Transformer-Based Multimodal AI for Disaster Prediction," Journal of AI Research, vol. 30, pp. 301-317, 2023.

[8] D. Johnson et al., "Ethical AI in Crisis Response: Bias, Transparency, and Fairness," AI & Ethics Journal, vol. 12, no. 1, pp. 50-68, 2022.



INTERNATIONAL
STANDARD
SERIAL
NUMBER
INDIA



INTERNATIONAL JOURNAL OF INNOVATIVE RESEARCH

IN SCIENCE | ENGINEERING | TECHNOLOGY

 9940 572 462  6381 907 438  ijirset@gmail.com



www.ijirset.com

Scan to save the contact details